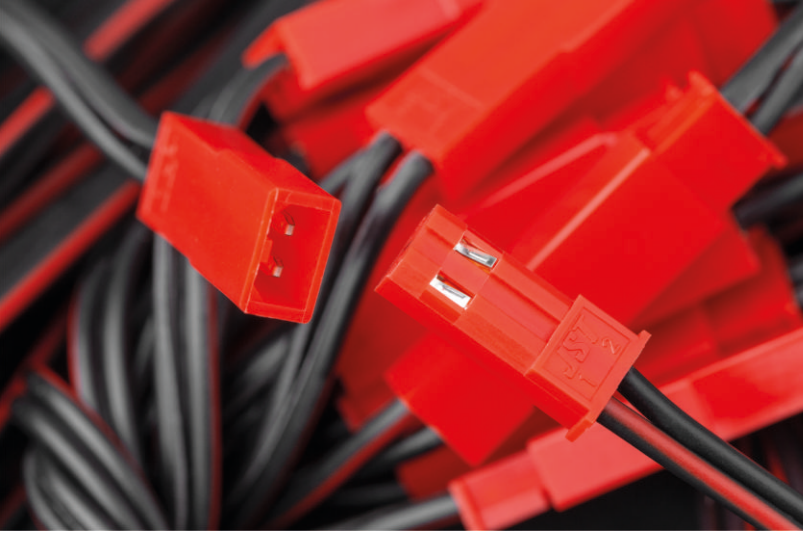


profitect

WIRE HARNESSES PRODUCER

Universal LED harnesses

WL type



A harness of wide use for powering LED light sources

Advantages:

- high durability
- safe connector
- any cable length
- possibility of forming into multi-output harnesses
- possibility of using various plugs
- miniature dimensions

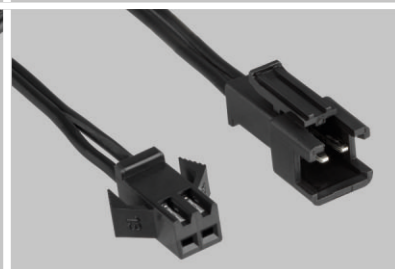
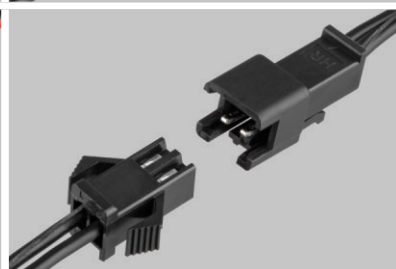
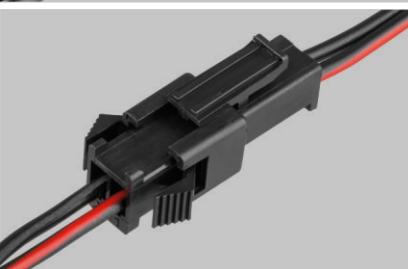
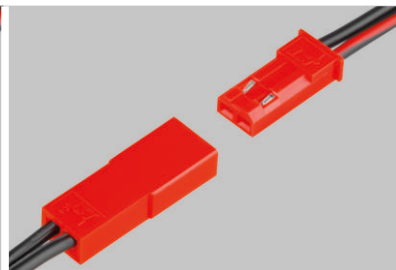
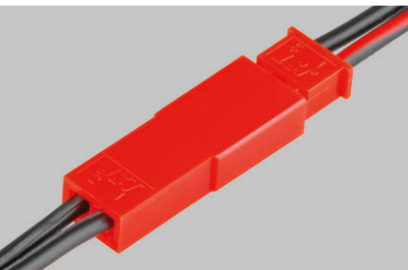
Technical data:

- rated voltage: 12, 24 or 230V
- rated current: up to 3A
- cables: adapted to a specific installation
- end of the cable insulated or terminated with connectors (according to individual needs)

Click and see more benefits of using ready-made electrical harnesses.



We design harnesses according to the individual requirements of our clients. We produce them using certified components. We offer precise, high-quality products.



www.profitect.net